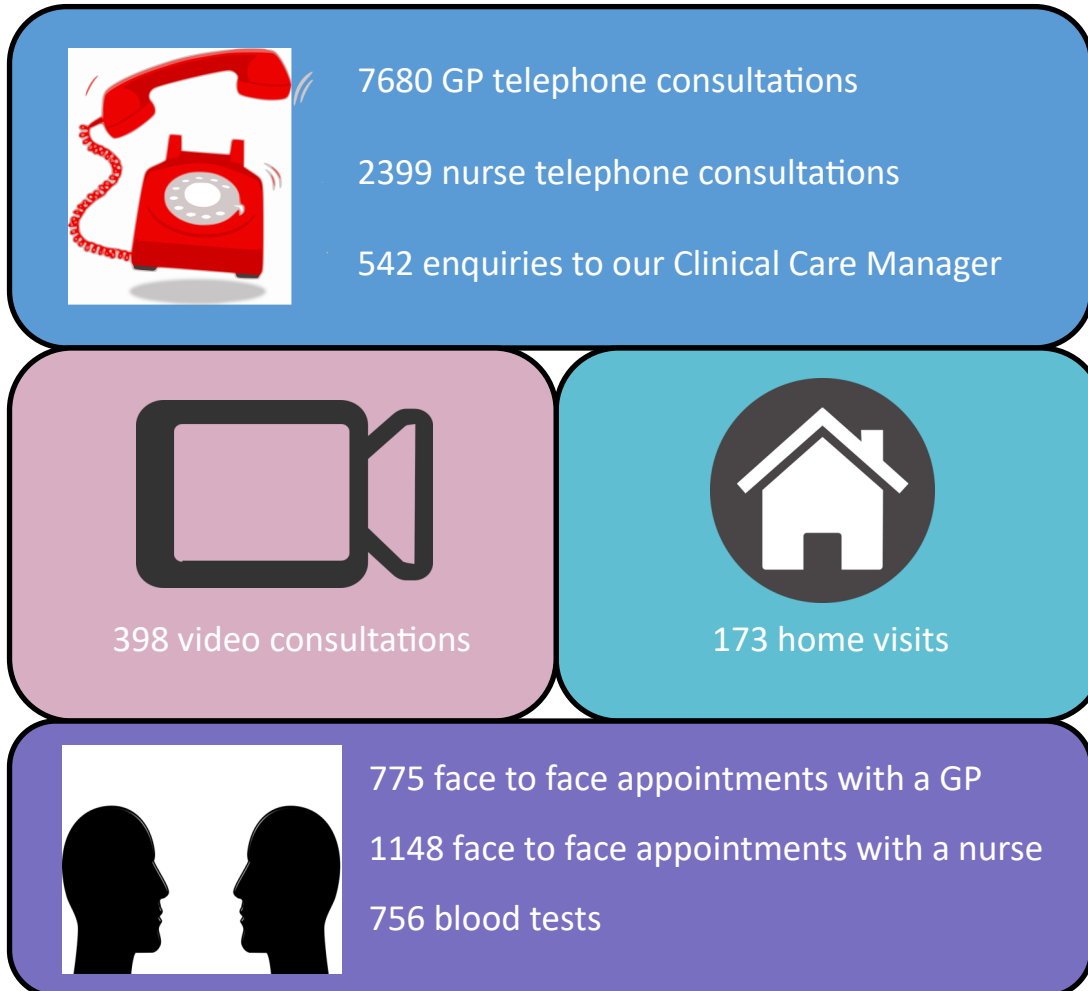


## LLANGOLLEN HEALTH CENTRE—PATIENT UPDATE

Thank you to our patients for their support and understanding while we've been reorganising how we work to provide a safe, sustainable service to our 9,200 patients. It's been extremely challenging and we have had to adapt quickly to a new and demanding way of working. We couldn't have done it without the amazing efforts of our entire team and the goodwill of so many of our patients.

This is a snapshot of what we've been doing over the past four months...



We are monitoring the current situation in the Wrexham area before we introduce any further changes to our current arrangements.

Please be aware that we are still here providing services to our patients and we can be contacted:

By email at [Llangollen.Admin@wales.nhs.uk](mailto:Llangollen.Admin@wales.nhs.uk)

Or by phone on 01978 860625

THANK YOU